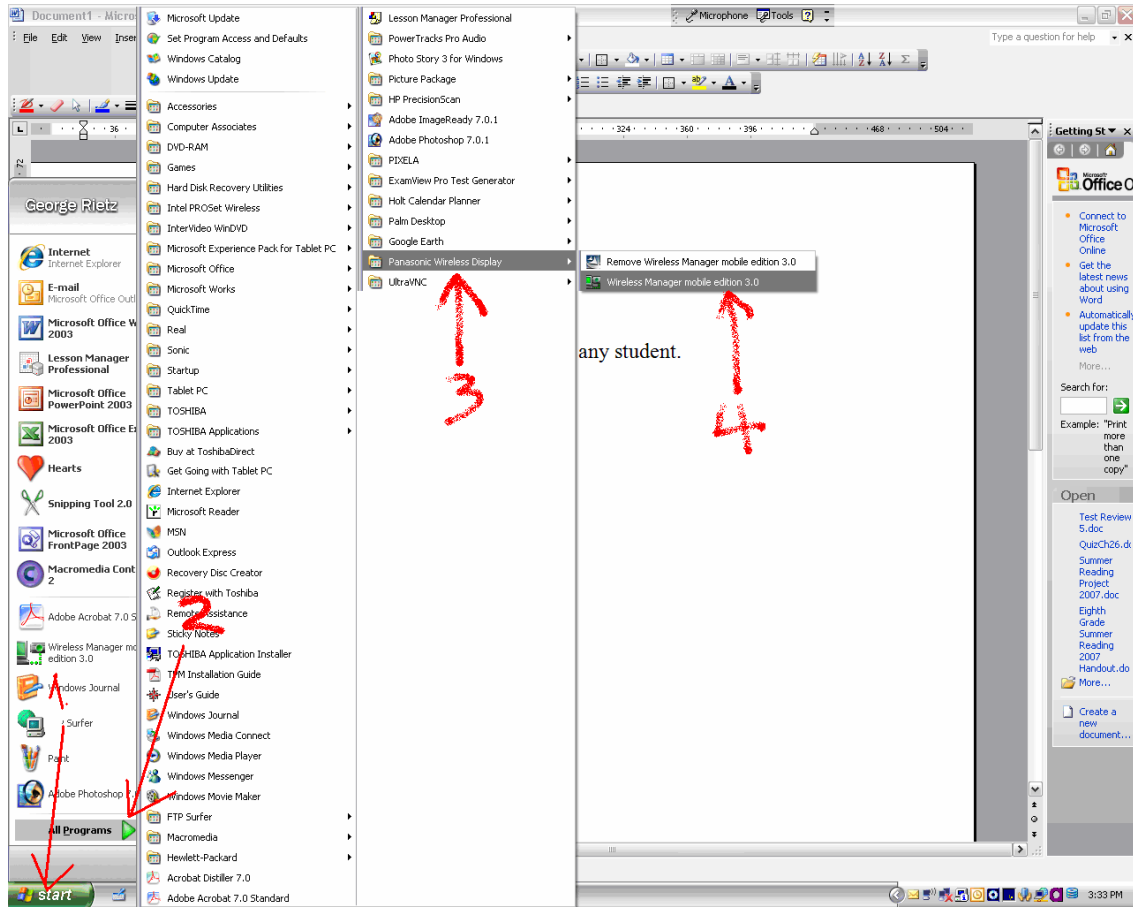


How to Use Your Wireless Projector...Wirelessly!

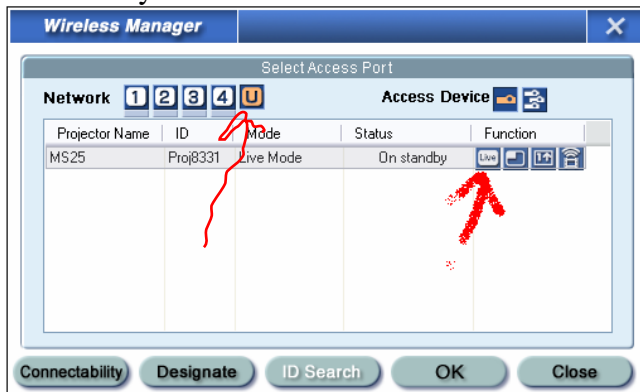
WARNING: Do not let students do this or give passwords to any student.

TIP: Wireless projection is not fast enough for showing movies or streaming video. For those, you should plug in as before.

1. Turn on your projector.
2. Start your projection software.



3. Select your room number.



4. Hit the "Live" button.



5. If you get this message, click "Yes."



6. Enter your password and hit "OK."

Your password is your room number in ALL CAPS with NO SPACES.
i.e. MS25

7. After a few seconds' delay, the image on your screen should also appear on your projector. If you close your tablet with the screen up (keyboard hidden) both tablet and projector displays should rotate 90 degrees, allowing you to tote and use your tablet like a clipboard while you roam around the room.
8. When you are done projecting, click the LIVE button again, close the projection software, and turn off the projector.